

Trestle™

For Brokers & Technology Providers

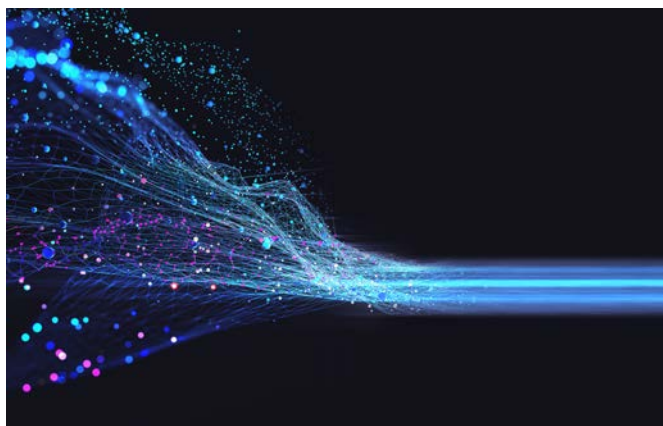
The easy button for all your data needs

Trestle by CoreLogic® is a national marketplace for multiple listing data and property intelligence, providing the vital information you need to power your business. Purpose-built to serve all kinds of data consumers from small brokers and local businesses to the largest technology companies and national aggregators, Trestle gives you easy, affordable access to listing data and location insights from one single source.

Everything you need in one place

Used by multiple listing organizations across North America for data licensing and distribution, Trestle handles the majority of the industry's active listings. It also offers professional grade property intelligence, making it the most convenient source of real estate data.

- Listing data from numerous multiple listing organizations in a single, aggregated data feed.
- Essential property intelligence data including public records, AVM's, comparables, neighborhood info, risk & hazards, and market trends (available in US markets only).
- Simple workflow for requesting, contracting, and paying for data.
- Convenient developer support by phone, email, and Slack chat.
- Broker tools for opting in/out of syndicator data feeds.



Listing data the way you want it

Trestle's powerful capabilities make it easy to acquire the listing data you need in your preferred format. Whether you're looking for standardized or native data, Trestle provides what you need.

- **Trestle RESO:** platinum-certified compliance with RESO standard data formats. Available in a variety of payloads for easy integration (IDX, VOW, broker, etc.).
- **Trestle Direct™** **New!** : Web API access to the full spectrum of local listing data including nonstandard data fields exclusive to Matrix™ and the individual multiple listing database.

Essential property intelligence

Agents and homebuyers alike are hungry for rich, local content beyond standard listing data to help inform and guide purchase decisions. Often, they have to visit multiple sites and data sources to get a complete picture of neighborhoods and properties of interest.

Trestle Location Insights™ **Coming Soon!** provides affordable, easy access to best-in-class property intelligence data, enabling you to take your website or real estate marketing & productivity tools to the next level, enriched with the complete datasets that agents and homebuyers expect. *Available in US markets only.

Packaged with Trestle's standardized and native listings for easy integration, Trestle Location Insights offers unrivaled property intelligence, in **one single data feed** including:

- Public records including sales & tax history
- AVM/property valuations
- Comparables
- Neighborhood info, demographics & schools
- Risk (fire, flood, hazard)
- Market trends



For more information, visit corelogic.com/trestle

©2023 CoreLogic, Inc. All Rights Reserved.

CORELOGIC, the CoreLogic logo, TRESTLE, TRESTLE DIRECT, TRESTLE LOCATION INSIGHTS, and MATRIX are trademarks of CoreLogic, Inc. and/or its subsidiaries. All other trademarks are the property of their respective holders.

CoreLogic