

Portfolio Intelligence and Monitoring™

A new view of your portfolio landscape with greater efficiency and improved results.

Servicing a mortgage portfolio is a daunting challenge filled with risk and lack of visibility. Missed information serves as a threat to your bottom line. Now more than ever, it is critical that servicers have a holistic view of their portfolios and a strong understanding of the fundamentals. Get a comprehensive view into the health and current risks of your portfolio with Portfolio Intelligence and Monitoring, a new cloud-based solution from CoreLogic®.

Know Your Portfolio Better Than Ever.

All property and transaction data, as well as credit data related to the property and consumer, are sourced automatically in the platform which features an enhanced new portfolio dashboard. This offers advanced algorithms for you to seamlessly ingest the data, which is displayed in aggregate, with the ability to filter by geography, dates, or other related values. The information can then be expanded as a list of properties for a more comprehensive review, with access for multiple users. With actionable insights from these unique data sources, Portfolio Intelligence and Monitoring empowers lenders and servicers to spend less time validating liens so you can put greater focus on risk mitigation and make more informed decisions.

The Portfolio Intelligence and Monitoring Advantage: Higher efficiency, lower costs, improved results all in one-stop shopping.

Portfolio Intelligence and Monitoring provides an improved modern self-service user interface that generates a property-level display of your portfolio landscape. Other features include easy data file submission, data file error-checking, data file history, and help resources. No more tedious filtering within Excel or other reporting tools, with improved change indicators that are visible as they occur (filterable for *any* period of time).



Comprehensive Portfolio View

Identify the seniority, status and security of liens on a property to make informed risk decisions.



Monitor Liabilities

Analyze potential liabilities that may dilute lender interest.



Advanced Analytics

Unique combination of public record data, credit data delivery* and CoreLogic Automated Valuation Models (AVMs) provides a comprehensive view of lien and equity position.

 **99.99%**

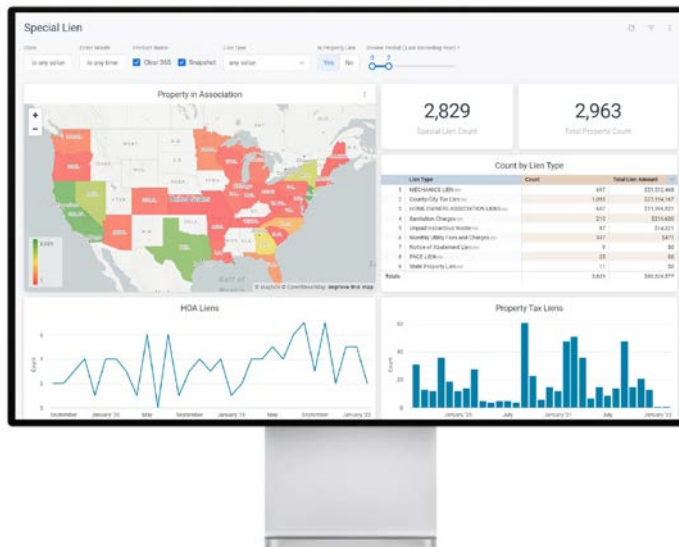
Coverage of property records

 **153M+**

Parcels across the U.S.

 **1B+**

Historical real estate transaction data records



Flexibility for Unique Needs

With multiple service levels, Portfolio Intelligence and Monitoring provides flexibility in choosing a solution that best meets the needs of your organization.

- **Snapshot** offers a single analysis on the health of your portfolio, displaying your preferred data points such as public record data, property insights, and credit data* for an enriched view.
- **365** provides ongoing surveillance and analysis to help detect change across your portfolio, allowing proactive response to new risks and opportunities.

Snapshot and 365 are offered through our two available **Datasets**, which are the Voluntary Lien Analysis and Special Liens Analysis (i.e., HOA/property tax liens). Both Datasets come with standard property analysis which include ownership validation, foreclosure and pre-foreclosure activity.

For a more comprehensive analysis of data from each set of uploaded properties, choose from a selection of additional modules, including a property ownership report, credit data delivery* (voluntary lien analysis), automated valuation models (AVMs) + equity analysis and property tax status.

In addition to the client plans above, we also offer **Standalone Reports** such as a Property Ownership Report and Fast Legal & Vesting Report.

Exceptional Use Cases

Portfolio Intelligence and Monitoring delivers data insights that fit broad mortgage servicing and data analysis needs. Our current clients utilize our data analysis module expansions for special cases like HOA super lien, senior lien mortgage monitoring, ownership confirmation, portfolio cleansing and more.

More fundamentals. More informed decisions.

Portfolio Intelligence and Monitoring continues to identify and order all liens on a property, their positions, balances and status. An equity analysis of your portfolio can be performed across three equity vantage points:

- **Senior Lien(s) Only:** The balances from the liens superior to your lien are the only liabilities factored into the calculation
- **Senior Lien(s) + Your Lien:** The balances from the liens superior to your lien and your lien are the only liabilities factored into the calculation
- **All Liens:** The balances of all open liens are factored into the calculation for liabilities

Call us at 866-774-3282 or email us at sales@corelogic.com to learn more.

*Optional credit data is available in Portfolio Intelligence and Monitoring with a separate agreement through CoreLogic Credco®.

© 2024 CoreLogic, Inc. All Rights Reserved.

CORELOGIC, the CoreLogic logo, Credco, Portfolio Intelligence and Monitoring, Portfolio Intelligence and Monitoring SNAPSHOT and Portfolio Intelligence and Monitoring 365 are trademarks of CoreLogic, Inc. and/or its subsidiaries. All other trademarks are the property of their respective holders.